

Announcements:

- Denton runway (13R/31L) construction is scheduled from late 2020 through early 2022 for development. The Denton closure begins in early 2021 and will last approx. 9 months.
- Please check Noise Lab for the upcoming scheduled runway closures.

**Dallas
Love Field
Community
Weekly
Update**

*February Twenty-First
Two Thousand Twenty*

LFEAC

The next LFEAC meeting will be Thursday,
April 16, 2020, @ 6 pm

The Love Field Environmental Advisory Committee will be held at the Administration Building located at 7555 Lemmon Ave. Please join us to discuss any environmental issues in the community including noise.

You may submit your noise concern through our Noise Lab website.








<https://dal.noiselab.casper.aero/>



"The higher we soar, the smaller we appear to those who cannot fly."

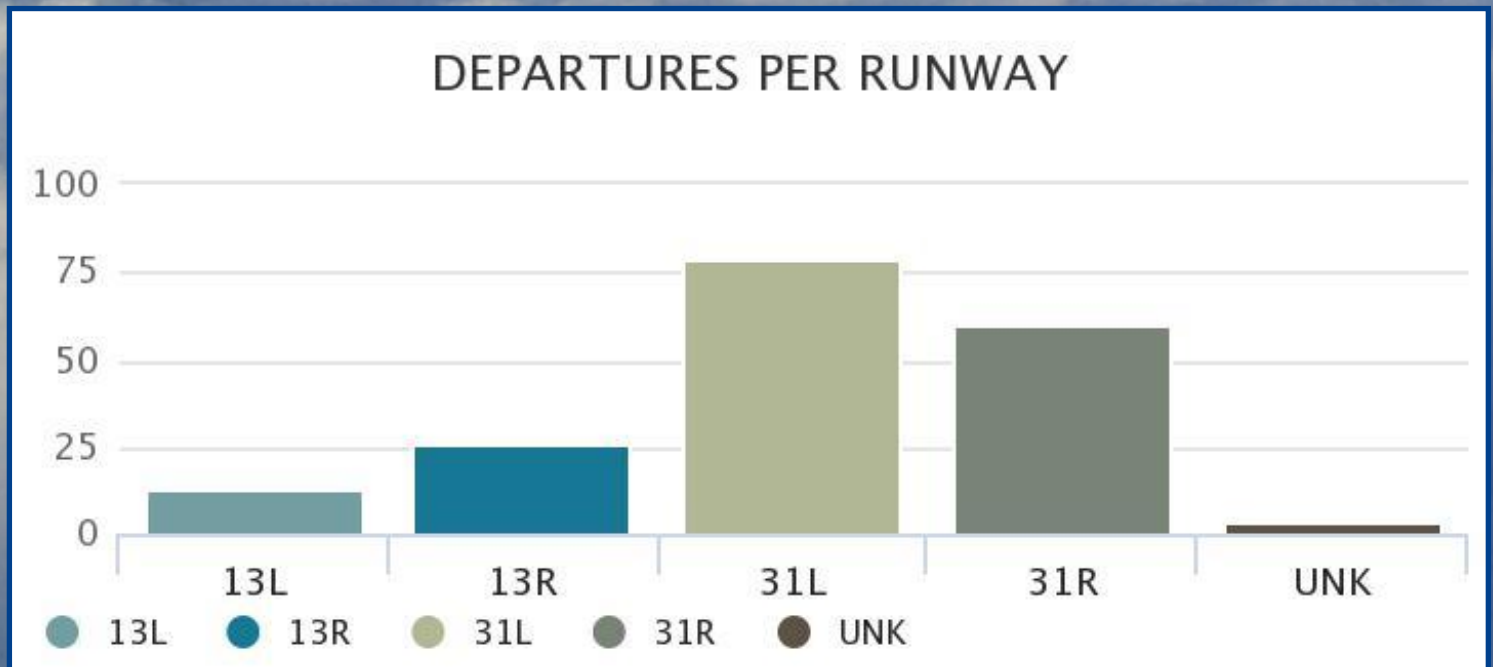
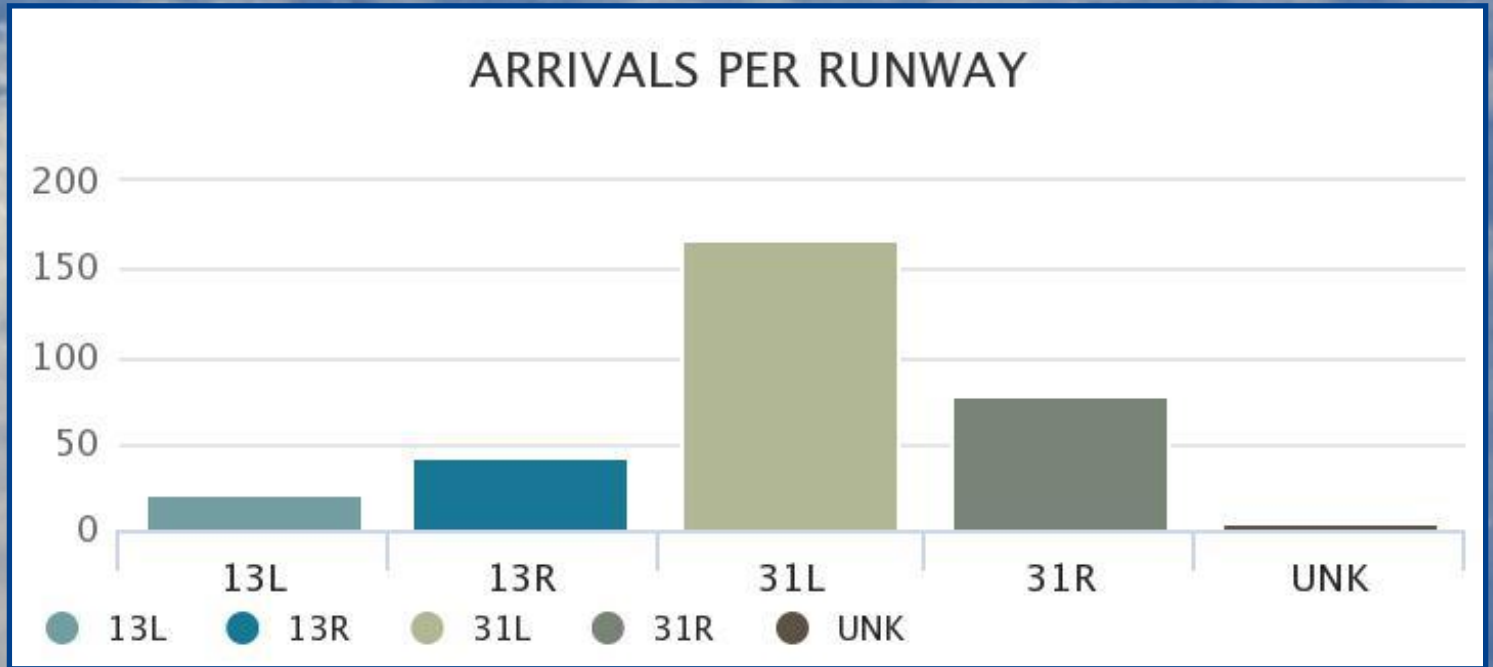
Friedrich Nietzsche

Weather Forecast

Fri Feb 21	Sat Feb 22	Sun Feb 23	Mon Feb 24	Tue Feb 25	Wed Feb 26	Thu Feb 27
						
50° F	57° F	63° F	65° F	59° F	52° F	57° F
38° F	46° F	51° F	42° F	37° F	33° F	43° F
N 7 MPH	SSE 11 MPH	S 22 MPH Precip 20%	NW 16 MPH	N 16 MPH	NNW 19 MPH	W 7 MPH

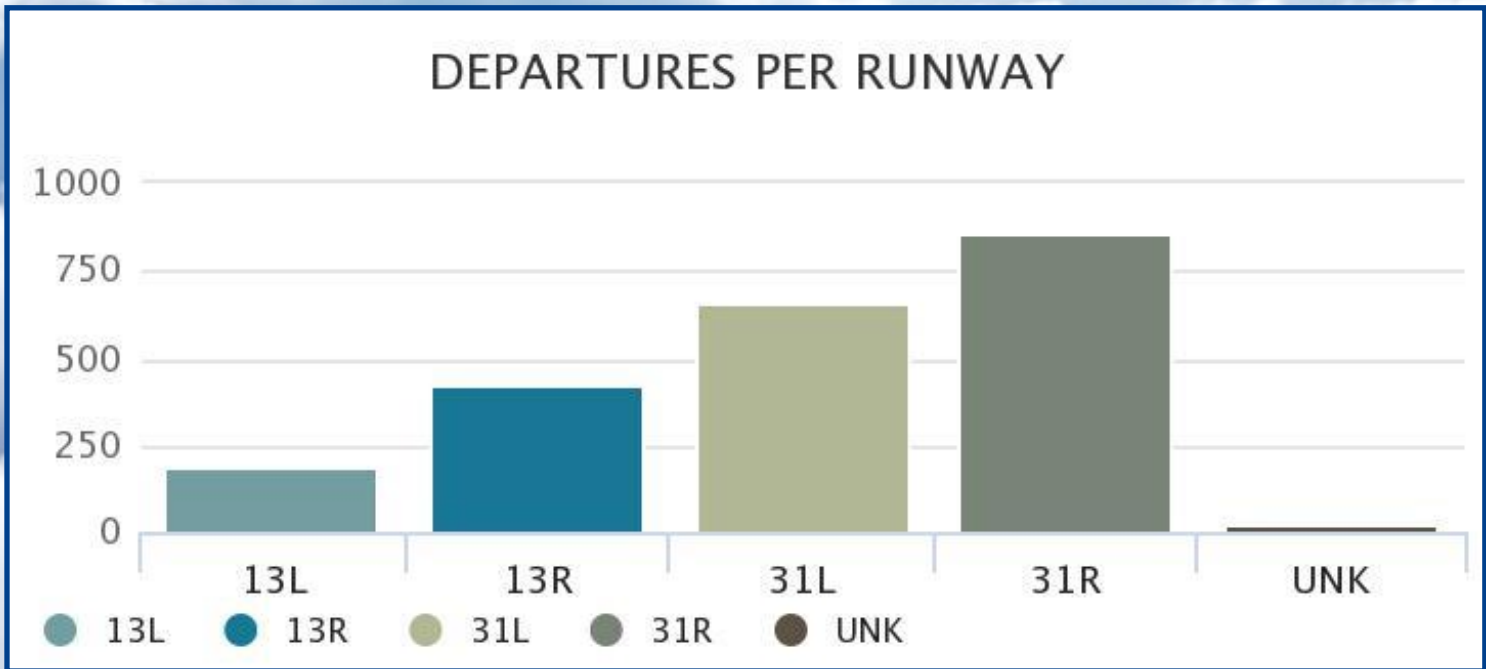
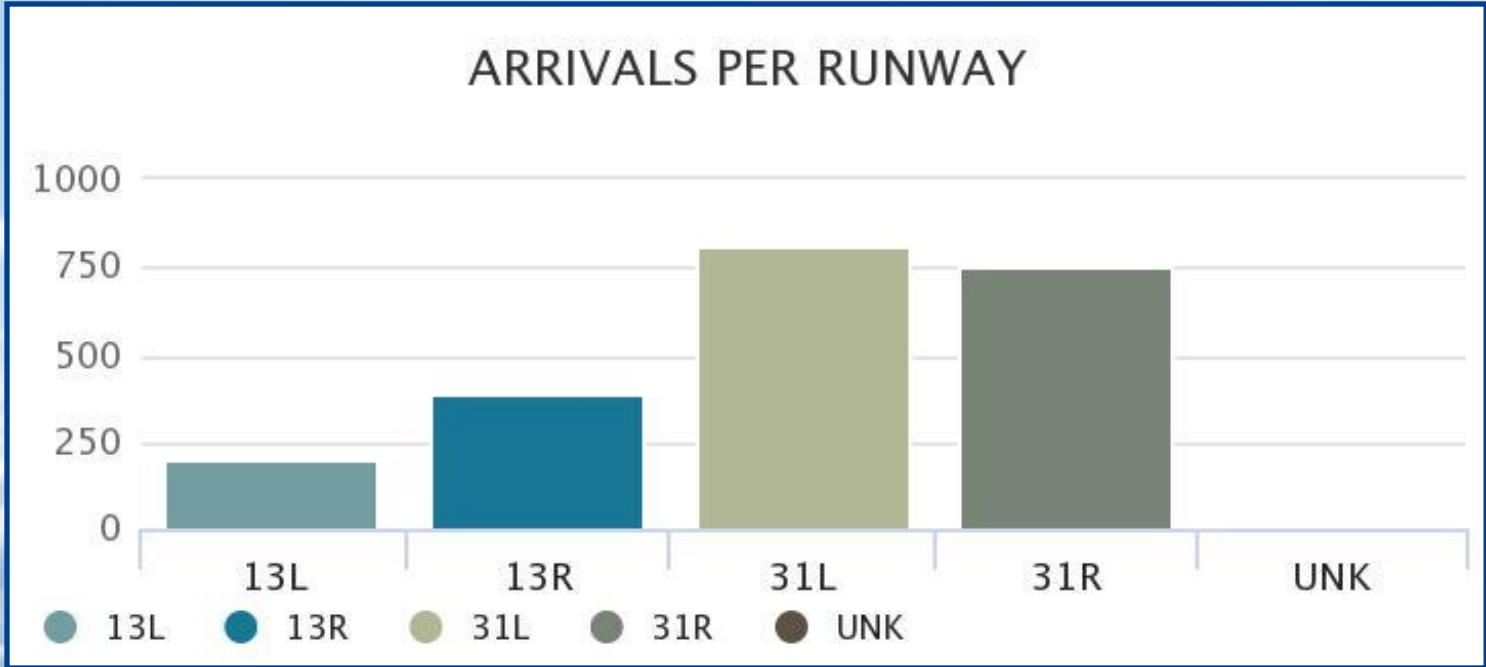
Arrivals and Departures Per Runway During Preferential Hours

For the Week of Feb 6th - Feb 12th



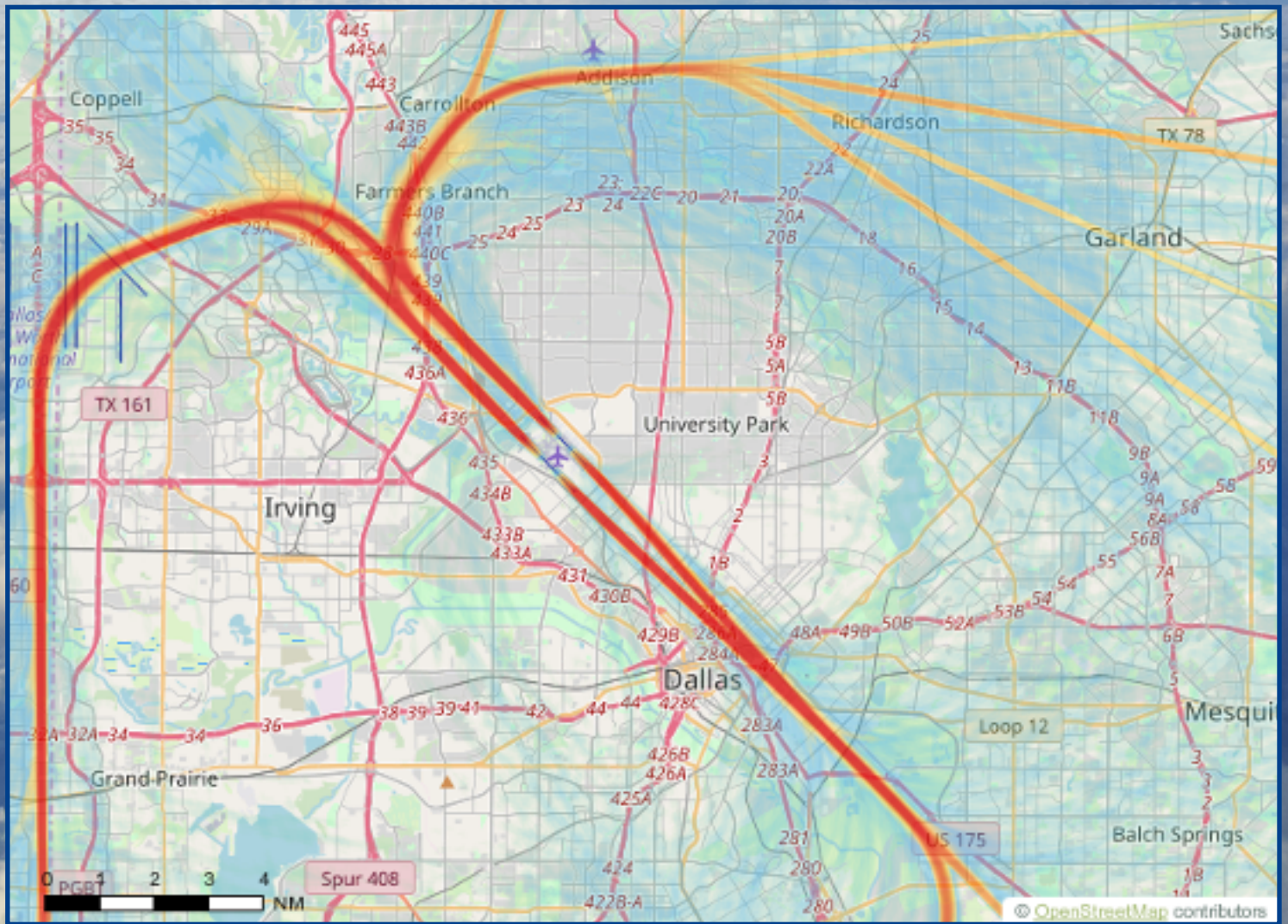
Arrivals and Departures

For the Week of Feb 6th - Feb 12th



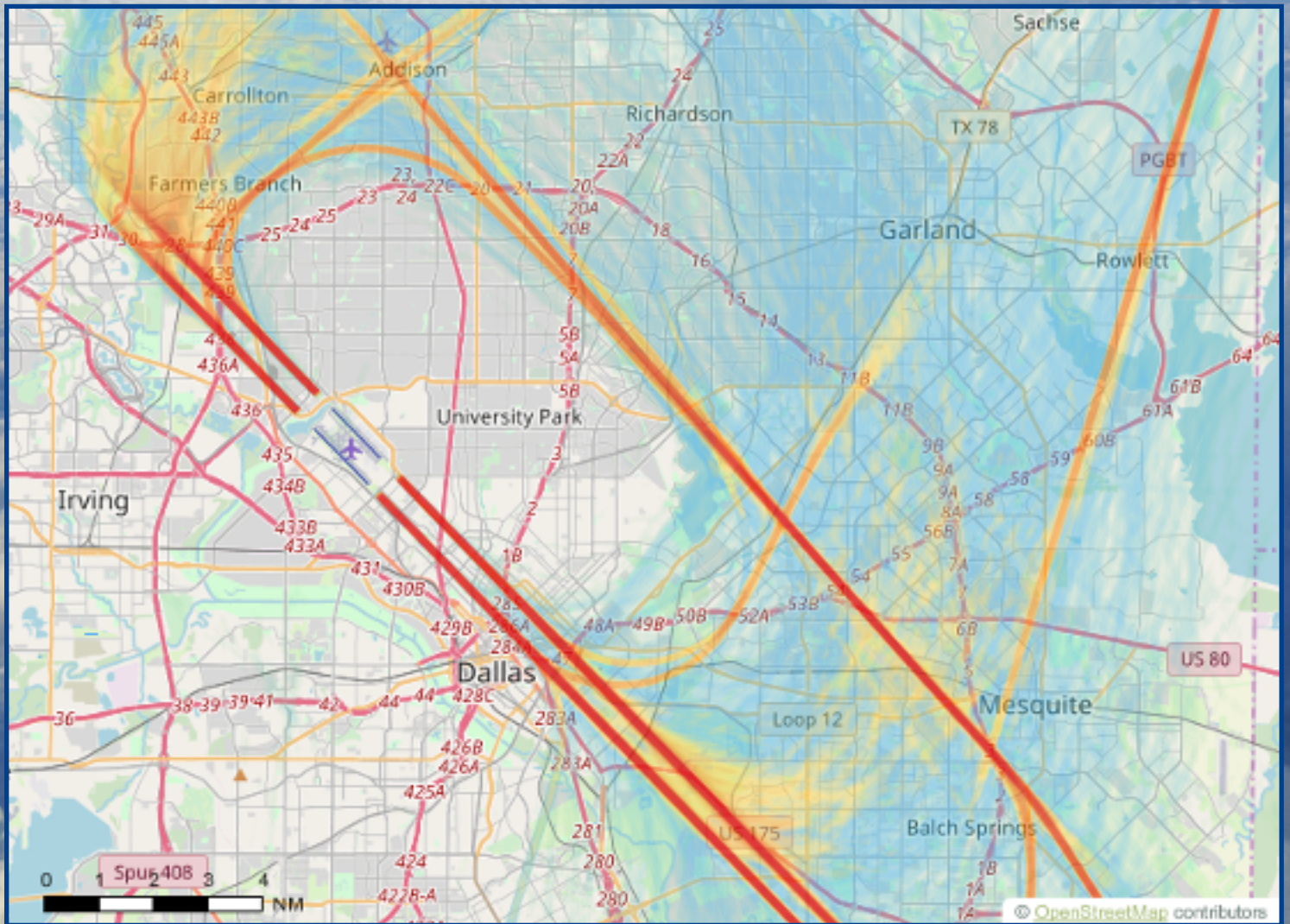
Departures

For the Week of Feb 6th - Feb 12th



Arrivals

For the Week of Feb 6th - Feb 12th



RUNWAY & TAXIWAY CLOSURES:

NEXT 7 DAYS

- **DAILY 0800 - 1700:** Taxiway B5 closed and Taxiway M closed between B5 and M3 for EAS.
- **Thu/Feb 20th 2330 - Fri/Feb 21st 0600:** RWY 13R/31L closed for AFM rubber removal.
- **Fri/Feb 21st 0100 - 0400:** TWY C closed between TWY C3 and TWY D for AFM plate positioning and cleaning. Aircraft utilizing Jet Aviation will coordinate with ATC & OPS as needed.
- **Sat/Feb 22nd 0800 - 1700:** RWY 13L/31R closed. TWY M between TWY M5 and TWY M6 closed. TWY B between TWY M6 and Tiger Ramp closed. WCMG/ABR, AFM rubber removal, FAA Tech OPS, and Hi-Lite.
- **Sat/Feb 22nd 0900 - 1200:** Signature Terminal 3 entrance closed for painting the non-movement area boundary marking. Any work on TWY A will be done on a pull-back basis. Time-permitting, additional work on CBP ramp shoulder markings may also be done on a pull-back basis. Hi-Lite.
- **Sun/Feb 23rd 2330 - Mon/Feb 24th 0600:** RWY 13R/31L closed for AFM and AVI/ELEC.
- **Mon/Feb 24th 2330 - Tue/Feb 25th 0600:** RWY 13R/31L closed for AFM rubber removal.
- **Mon/Feb 24th 2330 - Mon/Mar 2nd 2330:** TWY L between TWYs C7 and C8 closed for AFM repairs.
- **Wed/Feb 26th 2330 - Thu/Feb 27th 0600:** RWY 13L/31R closed for AFM.

ONGOING CLOSURES

- TWY M1 BTN TWY B AND TWY M CLSD
- TWY M BTN TWY B5 AND TWY M5 CLSD
- TWY B2 CLSD
- TWY B BTN GULFSTREAM SOUTH RAMP AND OVERNIGHT BRAVO RAMP CLSD
- TWY B BTN BOMBARDIER RAMP AND TWY B3 NONMOVEMENT AREA
- TWY B1 NONMOVEMENT AREA
- TWY C5 BTN TWY E AND TWY L CLSD
- TEMPORARY VSR STILL IN EFFECT NEAR BOMBARDIER

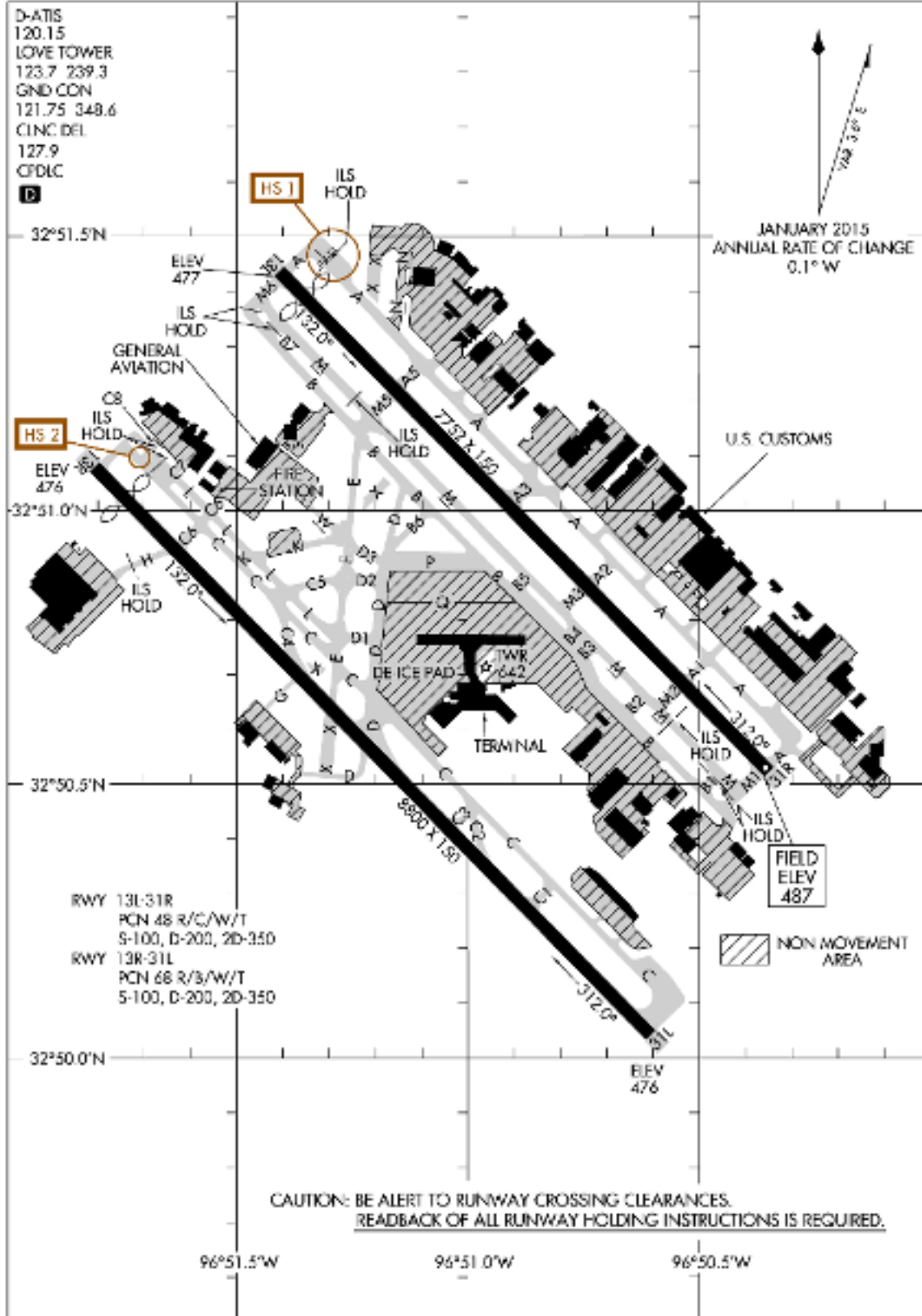
** Please see the airport diagram on the next page for locations of runways and taxiways.*

AIRPORT DIAGRAM

20030

AI-106 (FAA)

DALLAS LOVE FIELD (DAL)
DALLAS, TEXAS



AIRPORT DIAGRAM

20030

DALLAS, TEXAS
DALLAS LOVE FIELD (DAL)

In an effort to serve you better, Dallas Love Field has opened the Airport Operation Center (AOC) for your use. The AOC is staffed 24 hours per day to direct your airport related concerns.

If you are submitting an aircraft noise complaint, please call the AOC at 214-670-LOVE (5683).

Translated copies of this newsletter are available upon request by emailing the Department of Aviation Environmental Division at AVIEnvironmental@dallascityhall.com

Las copias traducidas de este boletín están disponibles a solicitud enviando un correo electrónico a la División de Medio Ambiente de la Aviación al AVIEnvironmental@dallascityhall.com

For questions or concerns please contact:



Isaac Ellison
Aviation Noise Specialist
City of Dallas | DallasCityHall.com
Department of Aviation

7555 Lemmon Ave

Dallas, TX 75209

O: (214) 670-6843

AVINoise@dallascityhall.com



Dallas Love Field